

MONTHLY MEMBERSHIP PROGRESS REPORT

LOCATION INDIA

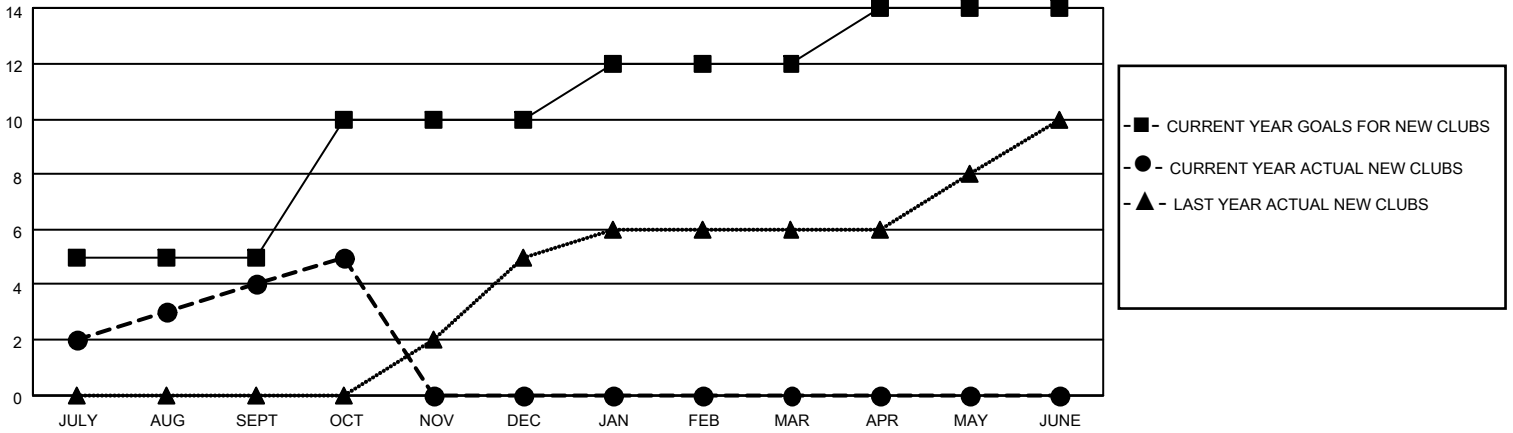
District 3234D1

Results as of: 10/31/2021

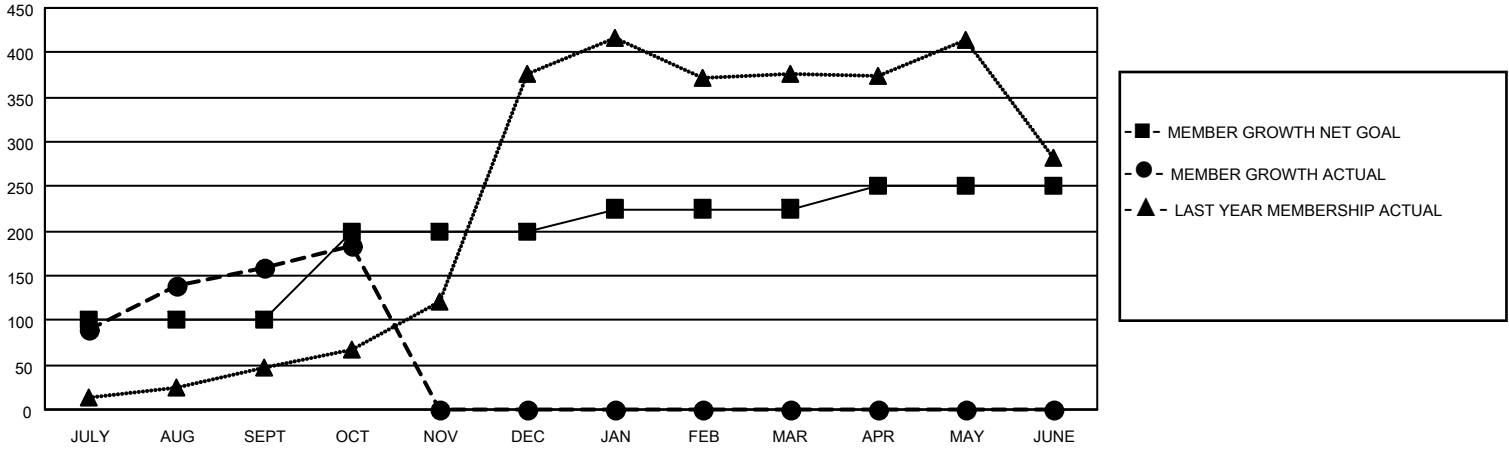
Clubs			
RESULTS FOR 2021-2022			
QUARTER	NEW CLUB GOAL	NEW CLUBS	DROPPED CLUBS
JULY/AUG/SEPT	5	4	0
OCT/NOV/DEC	5	1	0
JAN/FEB/MAR	2	0	0
APR/MAY/JUNE	2	0	0

Members			
RESULTS FOR 2021-2022			
QUARTER	MEMBER GROWTH NET GOAL	MEMBER GROWTH ACTUAL	DROPPED MEMBERS ACTUAL (including transfers)
JULY/AUG/SEPT	100	194	32
OCT/NOV/DEC	100	31	7
JAN/FEB/MAR	25	0	0
APR/MAY/JUNE	25	0	0

GOALS AND ACTUAL NEW CLUBS CUMULATIVE



GOALS AND ACTUAL MEMBERS CUMULATIVE



DROPPED CLUBS: 0

21 CLUBS OF 73 ADDED 1 OR MORE NEW MEMBERS

GENDER DISTRIBUTION

MALE	1,906 (72.28%)
FEMALE	731 (27.72%)
NON BINARY	0 (0.00%)
PREFER NOT TO ANSWER	0 (0.00%)

DROPPED MEMBERS

[CLICK HERE FOR CUMULATIVE MEMBERSHIP DATA](#)

DECEASED	7
CLUB CANCELLED	0
OTHER	32
TOTAL	39

TOTAL FAMILY UNIT MEMBERS 947

FAMILY MEMBERS PAYING HALF DUES 489